

Ultra Large All Electric Injection Molding Machines



MD1300, 1400HW, 1800, 1800HW, 3000HW

All Electric Injection Molding Machines

MDS-V Series

MD650WS-V MD850S-V MD850WS-V MD1000WS-V

MDS-V Specification

ITEM	UNIT	MD650WS-V						MD850S-V						MD850WS-V						MD1000WS-V																																																																																																					
		i55		i74		i100		i55		i74		i100		i55		i74		i100		i55		i74		i100																																																																																																	
Clamping System	-	Double Toggle												Double Toggle																																																																																																											
Clamping Force	kN(tf)	6,370(650)												8,330(850)												9,800(1000)																																																																																															
Tie Bar Space(HxV)	mm	1,100x1,100												1,100x1,100												1,320x1,320												1,400x1,400																																																																																			
Platen Size(HxV)	mm	1,540x1,540												1,620x1,620												1,840x1,840												1,900x1,900																																																																																			
Clamping Stroke	mm	1,000												1,200												1,200												1,400																																																																																			
Die Thickness(Min./Max.)	mm	400 / 1,040												500 / 1,240												500 / 1,240												500 / 1,240																																																																																			
Daylight(Min./Max.)	mm	2,040												2,440												2,440												2,640																																																																																			
Ejector Stroke	mm	200												200												200												200																																																																																			
Ejector Force	kN(tf)	196(20)												245(25)												245(25)												245(25)																																																																																			
Injection Type	T-m	i55						i74						i55						i74						i100						i55						i74						i100																																																																													
Screw Type	-	Y	A	B	Y	A	B	Y	A	B	Y	A	B	Y	A	B	Y	A	B	Y	A	B	Y	A	B	Y	A	B	Y	A	B	Y	A	B	Y	A	B	Y	A	B	Y	A	B	Y	A	B	Y	A	B	Y	A	B	Y	A	B																																																																		
Screw Diameter	mm	80	90	100	90	100	112	80	90	100	90	100	112	80	90	100	90	100	112	80	90	100	90	100	112	80	90	100	90	100	112	80	90	100	90	100	112	80	90	100	90	100	112	80	90	100	90	100	112	80	90	100	90	100	112	80	90	100	90	100	112																																																												
Theoretical Volume	cm³	2,262	2,863	3,534	3,181	3,927	4,926	2,262	2,863	3,534	3,181	3,927	4,926	2,262	2,863	3,534	3,181	3,927	4,926	2,262	2,863	3,534	3,181	3,927	4,926	2,262	2,863	3,534	3,181	3,927	4,926	2,262	2,863	3,534	3,181	3,927	4,926	2,262	2,863	3,534	3,181	3,927	4,926	2,262	2,863	3,534	3,181	3,927	4,926	2,262	2,863	3,534	3,181	3,927	4,926																																																																		
Injection Weight(PS)	g	2,081	2,634	3,252	2,926	3,613	4,532	2,081	2,634	3,252	2,926	3,613	4,532	2,081	2,634	3,252	2,926	3,613	4,532	2,081	2,634	3,252	2,926	3,613	4,532	2,081	2,634	3,252	2,926	3,613	4,532	2,081	2,634	3,252	2,926	3,613	4,532	2,081	2,634	3,252	2,926	3,613	4,532	2,081	2,634	3,252	2,926	3,613	4,532	2,081	2,634	3,252	2,926	3,613	4,532																																																																		
Injection Capacity	oz	73	93	115	103	127	160	73	93	115	103	127	160	73	93	115	103	127	160	73	93	115	103	127	160	73	93	115	103	127	160	73	93	115	103	127	160	73	93	115	103	127	160	73	93	115	103	127	160	73	93	115	103	127	160																																																																		
Max. Injection Pressure	MPa	207	190	155	207	185	150	207	190	155	207	185	150	207	190	155	207	185	150	207	190	155	207	185	150	207	190	155	207	185	150	207	190	155	207	185	150	207	190	155	207	185	150	207	190	155	207	185	150	207	190	155	207	185	150																																																																		
Max. Holding Pressure	MPa	180	170	140	180	170	135	180	170	140	180	170	135	180	170	140	180	170	135	180	170	140	180	170	135	180	170	140	180	170	135	180	170	140	180	170	135	180	170	140	180	170	135	180	170	140	180	170	135	180	170	140	180	170	135																																																																		
Injection Rate	cm³/s	804	1,018	1,257	954	1,178	1,477	804	1,018	1,257	954	1,178	1,477	804	1,018	1,257	954	1,178	1,477	804	1,018	1,257	954	1,178	1,477	804	1,018	1,257	954	1,178	1,477	804	1,018	1,257	954	1,178	1,477	804	1,018	1,257	954	1,178	1,477	804	1,018	1,257	954	1,178	1,477																																																																								
Screw Rotation Speed	min⁻¹	165	165	165	147	147	147	165	165	165	147	147	147	165	165	165	147	147	147	165	165	165	147	147	147	165	165	165	147	147	147	165	165	165	147	147	147	165	165	165	147	147	147	165	165	165	147	147	147																																																																								
Charging Capacity(PS)	kg/h	275	445	462	380	540	560	275	445	462	380	540	560	275	445	462	380	540	560	275	445	462	380	540	560	275	445	462	380	540	560	275	445	462	380	540	560	275	445	462	380	540	560	275	445	462	380	540	560																																																																								
Heater Capacity	kW	39.0												39.0												51.0												51.0																																																																																			
Cooling Water Volume	l/min	20X32°C												20X32°C												20X32°C												20X32°C																																																																																			
Electricity Capacity (Std. IM Unit)	kVA	114						133						130						143						130						143						165						177																																																																													
Nozzle Center Height(Without Groud)	mm	1,485												1,525												1,605												1,575												1,655												1,575												1,655																																															
Dimension (Std. IM Unit)	L mm	10,050												10,493												10,610												11,003												11,914												10,610												11,914												11,435												11,878												12,789											
	W mm	2,650												2,750												2,791												2,811												2,891												2,811												2,891																																															
	H mm	2,625												2,711												2,791												2,811												2,891												2,811												2,891																																															
Machine Weight (Std. IM Unit)	ton	45						47						50						51						54						54						55						58						62						63						66																																																											

- Note) 1.The numeric values in this table are based on SI unit
- 2.Injection Capacity = (Injection pressure)×(Theoretical shot volume)
- 3.Theoretical shot volume = (Screw cross section)×(Screw stroke)
- 4.The shot mass (PS) is assumed to be 92% of theoretical shot volume
- 5.Plasticizing capacity is assumed by Polystyrene
- 6.Max.injection pressure and Max. holding pressure may be limited by cycle time
- 7.Specifications are subject to change without notice

UBE MACHINERY CORPORATION,LTD. URL: <http://www.ubemachinery.co.jp>

- Ube Head Office** 1980 Kogushi-Okinoyama Ube city Yamaguchi Pref. 755-8633 Japan
TEL: (81)836-22-6276 FAX: (81)836-22-6279
- Ube Machinery Works** 1980 Kogushi-Okinoyama Ube city Yamaguchi Pref. 755-8633 Japan
TEL: (81)836-22-6205 FAX: (81)836-22-6284
- Seoul Branch** 2F KOAMI Bldg., 13-31, Yoido-dong, Youngdeungpo-Ku, Seoul 150-729, Korea
TEL: (82)2-784-0486 FAX: (82)2-784-0489
- Taipei Branch** 9, TAF1, No. 120, SEC. 1, Nanking East Road, Taipei, 16844097 Taiwan, R.O.C.
TEL: (886)2-2542-0668 FAX: (886)2-2542-0226



UBE Machinery Inc. 5700 S. State Street Ann Arbor, Michigan 48108. U.S.A.
TEL: (1)734-741-7000 FAX: (1)734-741-7017 URL: <http://www.ubemachinery.com>

UBE MACHINERY (Shanghai) LTD. No.91, Futebei Road, Waigaoqiao Free Trade Zone, Pudong New Area, Shanghai, 200131 China
TEL: (86)21-5868-1633 FAX: (86)21-5868-1634 URL: <http://www.ubesh.com>

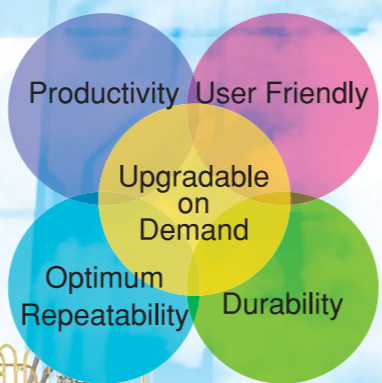
UBE MACHINERY THAI CO.,LTD. 795/1 Rama 9 Rd, Bangkapi Huaykwang Bangkok 10320, Thailand
TEL: (66)2-716-8184 FAX: (66)2-716-8186

UBE Europe GmbH Immenmann Hof Immermann Strasse. 65B 40210 Dusseldorf. Germany
TEL: (49)211-178830 FAX: (49)211-3613297 URL: <http://www.ube.es>



UBE MACHINERY CORPORATION,LTD.

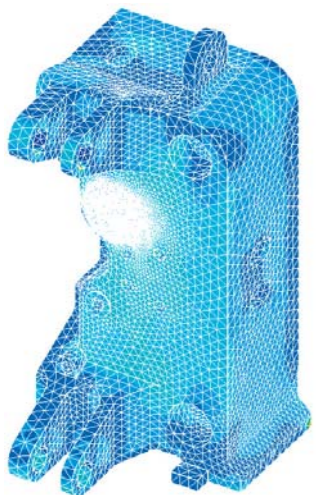
Value Innovation



①The photographs include optional items. ②The appearance and the specifications are subject to change without notice. ③Unauthorized reprint from this catalogue is prohibited.

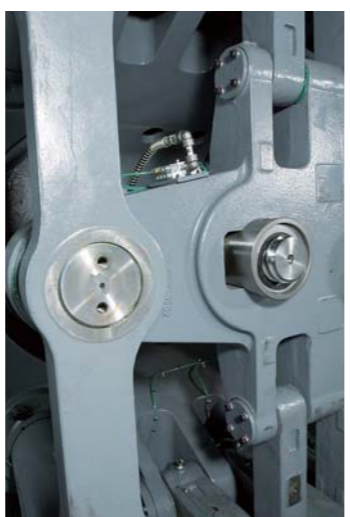
UBE is the global leader in large all electric injection molding machines. From the introduction of the MD850SIII in 1990's to the world's largest all electric the MD3000HWS IV in 2006, UBE is always at the leading edge of all electric injection molding machine technology. Now, we introduce the largest advance in technology with our new S-V series, the most in injection molding machine "Value".

Rigid Wide Platen Design



Using FEM analysis, UBE has increased the rigidity and further reduced deflection of the platens and base structure of the S-V. The platen deflection has been reduced by 60% from the previous model. Wide platen designs enable larger tools for improved productivity.

New Advanced Ball Screw Design



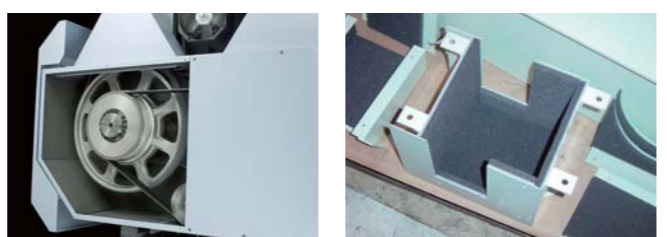
Improved ball screw seals reduce grease volume by 90% from competitor's design. The improved design also increases durability to enhance ball screw life. Grease distribution control reduces both grease consumption and improves ball screw wear. The economy of grease use and the improved cleanliness of the plant environment are true competitive advantages of the new design.

Electric Power Safety Gate



All UBE S-V all electric machines now have electric belt drive safety operator gates. This eliminates the need for pneumatics in the machine operation. The new electric drive improves gate speed by 60% from pneumatics.

Reduced Decibel Design



Through the use of new insulated covers and belt designs, the dB level has been extremely reduced.

Accurate and Repeatable Injection



The use of linear guides for the injection unit reduces the friction ratio to provide less inertia, and improved injection response. Improved amplifier response brings finer injection control and tuning.

New High Response Servo System



UBE S-V now has the latest in all digital servo design. The more efficient amplifiers utilize fiber optics for amplifier to amplifier connection and reduce heat, improve response, lengthen life, to improve your production capability.

Distinguished Energy Saving

Recycling energy heat loss which occurs at servo motor's deceleration provides you substantial energy saving.

New S-V Control



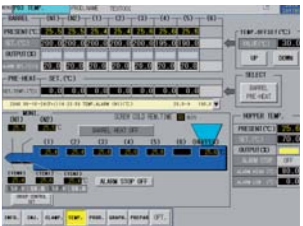
S-V maintains easy S-IV screen architecture. Easy to operate, easy to view, improved durability of the touch screen.



Injection, Charging Screen (10speeds, 10pressures)



Clamp, Eject Screen (6speeds each for open / close)



Heat Profile Screen



Graphics on Injection (Velocity vs Pressure)



Graphics on Clamp (Velocity vs Pressure)



Maintenance Screen

Shot No.	Pressure	Temperature	Weight	Volume	Time	Defect
1	100.0	150.0	1.50	15.00	0.10	OK
2	100.0	150.0	1.50	15.00	0.10	OK
3	100.0	150.0	1.50	15.00	0.10	OK
4	100.0	150.0	1.50	15.00	0.10	OK
5	100.0	150.0	1.50	15.00	0.10	OK
6	100.0	150.0	1.50	15.00	0.10	OK
7	100.0	150.0	1.50	15.00	0.10	OK
8	100.0	150.0	1.50	15.00	0.10	OK
9	100.0	150.0	1.50	15.00	0.10	OK
10	100.0	150.0	1.50	15.00	0.10	OK

Production Monitor Screen (Stores 1000 shots)



Valve Gate Setting Screen (Optional)



Hot Runner Setting Screen (Optional)